



RACINE LUTHERAN HIGH SCHOOL

Encourage one another and build each other up.

1 Thessalonians 5:11

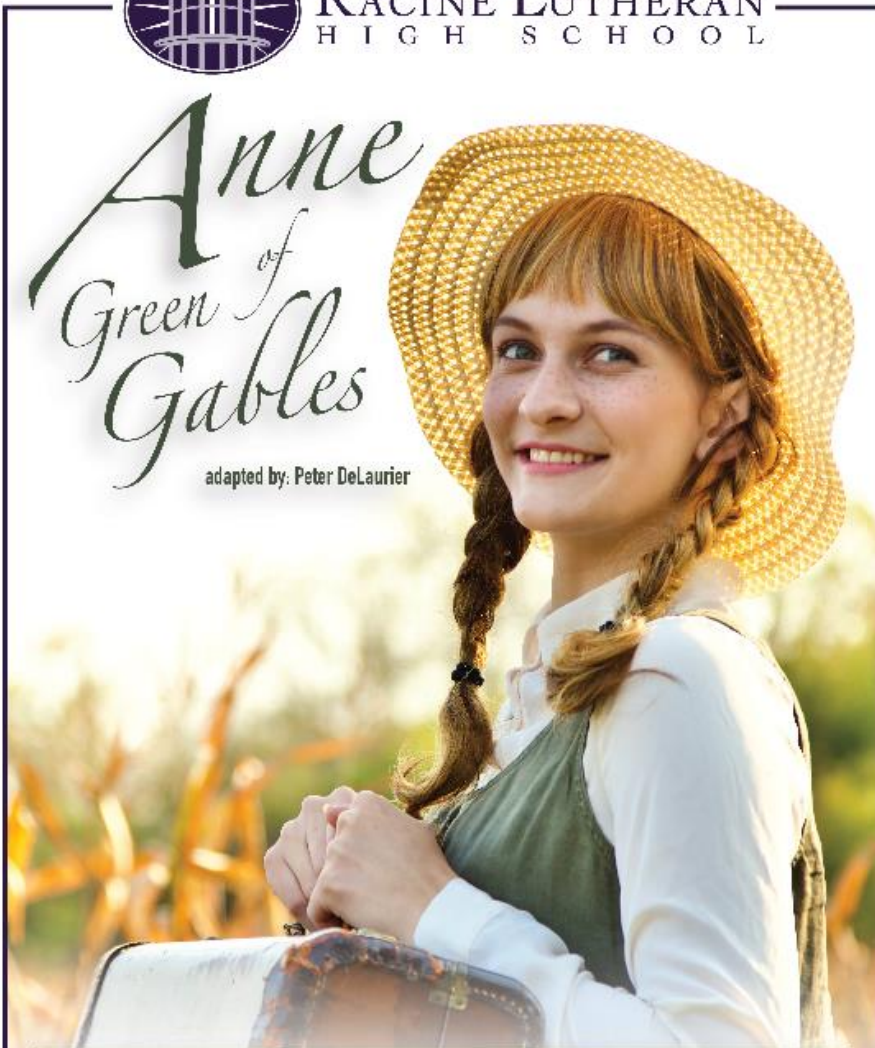
Weekly News – October 26, 2021



RACINE LUTHERAN
HIGH SCHOOL

Anne of Green Gables

adapted by: Peter DeLaurier



Racine Lutheran High School
Performing Arts Department
251 Luedtke Avenue
Racine, WI 53405

Friday, October 29 @ 7:00pm
Saturday, October 30 @ 2:00pm
Saturday, October 30 @ 7:00pm
Friday, November 5 @ 7:00pm
Saturday, November 6 @ 5:00pm

Cash accepted at the door.
General Admission - \$7
Seniors and Students - \$5
Doors open one hour prior.

We ask that all patrons honor current face covering guidelines.

For more details call 262.637.6538 or visit RacineLutheran.org for online payment options.

***Parents** – please continue to monitor your children for symptoms of illness and keep them home if they are not feeling well.

***Parent-Teacher Conferences** will be conducted virtually this evening. The signup for a conference is now closed. If you scheduled a conference, you should be getting a link from the teacher.

***Bus information** – To restart busing, please contact the RUSD transportation department at 262-631-7138 or transportation@rusd.org at least one week before busing should be resumed. Please include your child's name and school and Bus ID # if you have it.

***Seniors** – See the picture information at the end of the newsletter.

***Text messages** – DO NOT RESPOND TO AUTOMATED TEXT MESSAGES FROM RLHS.

***Pictures** – Students should have brought home their ordered photo package or a postcard with online order instructions. **Picture retake day is scheduled for Friday morning, October 29.** If photos were already ordered, and you would like a retake, please return the original photo order to the Main Office by October 29. Students that were absent on the original photo day will also have their yearbook photos taken that day. Contact the Main Office with any questions.

***JMC family app** – JMC now provides an app available for families to use. Here is the link to get you started and then become familiar with its features, including making lunch payments and reporting absences. You can download the app from your app store. The first time you use the app, you will need this **code: 0669.**
<https://intercom.help/onlinejmc/en/articles/5016853-introduce-the-jmc-family-app-to-your-families-and-staff>

***Parents** – Please **review your JMC accounts.** Make sure **your child's medical information,** as well as emergency contacts, technology use agreement, and household income report, are updated. Do not assume that information you shared in the past is still listed. The system does not roll some information from year to year, so you may need to re-enter certain details.

***Lunch** – Parents, we are using the lunch checkout system that is part of the JMC program. You are able to deposit money onto your student's account through the JMC parent portal, or you can send cash or a check to school. There are envelopes and a lock box into which your student can deposit cash or check. If your student would like to purchase any item at lunch, he/she will need to have money on his/her account to do so.

***RLHS Volunteer Hours** – RLHS families are asked to serve a minimum of 20 volunteer hours annually to benefit the school (from July 1, 2021, through June 30, 2022).

Each family is asked to serve at least six of their 20 volunteer hours at our Thrift Shop. Other volunteer opportunities include selling concessions or tickets at home athletic events. See below for details on signing up and watch the *Weekly News* for future events where volunteers are needed.

After working at the Thrift Shop, helping at a game, or volunteering at a school event – you must log your hours through the JMC parent portal. Click the link on the home page to enter your information. If you have any questions, please contact Krista Long at RLHS at 262-637-6538 or klong@RacineLutheran.org.

***Thrift Shop – SATURDAY VOLUNTEERS ARE NEEDED!!**

The **Thrift Shop is open Wednesdays, Thursdays, Fridays, and Saturdays and is looking for help during morning shifts (10 a.m. – 1 p.m.) and afternoon shifts (1 p.m. – 4 p.m.).** One adult and one student, or two adults, are needed for each shift.

To schedule your Thrift Shop hours, please call the store schedulers listed below.

The Thrift Shop – 1222 Lathrop Avenue

Schedulers:

To sort, clean, price and/or help with incoming donations – call Pat Hellenberg 262-498-8851

To help with checkout/cashier – call Barb Tertel 262-632-1070

MORE Thrift Shop – 1228 Lathrop Avenue

Schedulers: Peggy Groth 262-498-2161 or Judy Lamers 262-321-4095

***Students who see something, should say something.** If a student is not comfortable contacting a staff member with a serious concern, he/she can contact Crime Stoppers by Smartphone app or Webtip or phone.

Smartphone App: Get 'P3 Tips' app for iPhone or Android (Play Store)

Webtip: Google: Racine Crimestoppers URL: www.racine.crimestoppersweb.com

Click on 'Submit a Tip'

Phone: 262-636-9330 or 888-636-9330

*Be sure to "like" us on **Facebook** – available pages are:

Racine Lutheran High School

Racine Lutheran High School Admissions

Racine Lutheran High School Athletics

Racine Lutheran High School Music Program

Racine Lutheran Alumni

Follow us on **Twitter**:

@RLHScrusader

@RLHSathletics

@RLHSmusic

Follow us on **Instagram**: **@racinelutheran**

Subscribe to our **YouTube Channel – RLHS YouTube**

Link: https://www.youtube.com/channel/UCyS_GiNrW2eDjPM2jpYmJMg



News from the Guidance Office

***College Representatives/Visits** – Admissions counselors from area colleges come to RLHS to visit with our students. This week, representatives will be here from **Concordia University Wisconsin, UW-Oshkosh**, and the **U.S. Navy**. Next week, recruiters from **MSOE (Milwaukee School of Engineering), UW-Green Bay**, and the **U.S. Army** will be here. Sign-up sheets are in the Learning Center or see Mrs. Juga directly with questions.

***New Guidance Resource** – The RLHS Guidance Office is excited to announce the creation of our own **Google Classroom** offering topics of interest to our students, including planning checklists specific to each grade. Students are encouraged to join using the following link:

<https://classroom.google.com/c/NDAYODU0MTA4NDEy?cjc=lho6hdk>

*The Guidance Office has a **binder of scholarship opportunities**. Students are welcome to look in the binder at their convenience. Some of the recent opportunities we've been made aware of are:

- **Numerous scholarship opportunities** are listed at <https://studentschoalrships.org>.
- **Halpin Technical Scholarship** requires the student to be selecting a technical school, apprenticeship, or trades program and be in academic good standing with an accumulative GPA of 2.5 or better.
- **James M. Wunsch Memorial Scholarship** requires student to be pursuing a healthcare related degree. GPA 3.0 or better. Deadline January 10, 2022
- **Mary E. Hamilton Memorial Scholarship** requires student to be pursuing a healthcare related degree. GPA 3.0 or better. Deadline January 10, 2022.
- The **Beta Sigma Psi National Educational Foundation** offers scholarships and grant opportunities for members of the Lutheran community. These opportunities can be found at: <https://www.betasigmapsi.org/scholarships-for-high-school-students/>

***Seniors** – Go to www.fafsa.gov for more information and to file your FAFSA. Also, free assistance to completing the FAFSA is offered through: www.collegegoalwi.org. More information is available in the Guidance Office.



ATTENTION ATHLETES

DID YOU KNOW YOU COULD BE A 4.0 STUDENT
AND NOT QUALIFY FOR A D1 SCHOLARSHIP?
COME FIND OUT WHAT YOU NEED TO KNOW TO QUALIFY!



ATTEND OUR FREE WORKSHOP

D1, D2, D3, NAIA and JUCO College Athletic Academic Requirement Workshop
This event is for families to learn how to navigate D1, D2, D3, NAIA and JUCO academic requirements.



Dr. Stacia Thompson
20 years higher education and eligibility workshop experience



William Norwood
William owner AIM High Fitness is a former JUCO and D1 student athlete



Honest Game
Honest Game will present their athletic academic web-based platform

DATE AND TIME: **OCT. 31**
SUNDAY
2:00pm - 4:00pm

LOCATION: **Racine Creative Center**
524 Main Street, Racine WI, 53403
Suite 311
(Downtown Racine - Monument Square)

REGISTER:
Participants will receive an Honest Game discount!
Seating is Limited!



www.RacineSportsInfo.com

Racine Creative Center | 262-900-1234 | timb@racinecreativecenter.com

News from the Athletic Office

***Football playoffs continue this week.** Admission for all spectators, including students, is **\$6**, and no passes are accepted.

Level 2 – Friday vs. Campbellsport at Horlick Field, 7 p.m.

***We are looking for one more person to take tickets for the football game on Friday.** Free admission for the volunteer.

***Vaping and smoking** at high school events are always prohibited.

***Racine Lutheran High School is now on the NFHS Network!** All home volleyball and basketball games will now be livestreamed for anyone to view. Many of our away games are webcast on this platform as well. If you can't make it to the game, or if you have out of town relatives who want to watch, go to nfhsnetwork.com and search Racine Lutheran High School. A subscription is required.

***Our previous football jerseys** are available for purchase. These are the game worn jerseys from 2016-2020, including the 2018 state championship game. Cost is \$30 for one color, \$50 for the pair. Not all numbers are available. Please contact Mr. Block to arrange purchase.

*Please be aware of the following **WIAA Covid quarantine rules**. If a student/athlete is determined to be a close contact with a confirmed positive case of Covid, they will:

--not have to quarantine if they have been fully vaccinated.

--have to quarantine for 10 days (or 7 with a negative test on the 6th day) if they have not been fully vaccinated.

***It is time to get ready for winter sports**. Athletes cannot begin participation in practice until students are registered for their sport. In order to get a registration card, all the following must be turned in to the Athletic Office:

PLEASE NOTE GIRLS BASKETBALL PLAYERS--due to teachers' conference, you must be fully registered by November 5 to begin practice on time.

1) A physical exam is required of all student-athletes for the first and third year of high school participation.
OR

1a) An alternate year card is required of all student-athletes for the second and fourth year of high school participation.

2) Sign and return the Lutheran High Athletics Agreement and the Concussion Information and Acknowledgement Form which includes the Lutheran High Athletics Policies, WIAA Policies, the Metro Classic Conference Sportsmanship guidelines, the Ascension All Saints Athletic Training Consent for Care and Treatment, and student/parent concussion information. Please read the Athletic Handbook prior to signing this form.

3) Pay Participation Fee – These fees are used to offset some of the cost for transportation, officials, and equipment. The participation fee is \$125 per season with a cap of \$375 per year for a family (Wrestling co-op: \$200 made out to St. Catherine's). This fee does not cover the cost of hats, socks, etc.

AGAIN, PLAYERS MAY NOT PARTICIPATE IN PRACTICE UNTIL ALL FORMS AND FEES HAVE BEEN TURNED IN TO THE ATHLETIC OFFICE.

All forms can be found on the Racine Lutheran website at RacineLutheran.org. Click "Athletics" and print out the appropriate forms. Please note that the forms only need to be turned in once each school year.

***Basketball parent meeting: November 2, 7 p.m.**

***Girls basketball practice starts: November 8**

***Boys basketball practice starts: November 15**

***Wrestling practice starts: November 15**

***Any students interested in wrestling** for the St. Catherine's/Racine Lutheran/Catholic Central tri-op should email Coach Nick Loomis at nloomi@yahoo.com.

***Basketball store** – Here is the link for the basketball store. Please email questions to Coach Hullum at jhullum@RacineLutheran.org. <https://cratusdesign.com/school-and-clubs/racine-lutheran.html>

***Game schedules** are on the online school calendar which can be found [here](#). Or click on the "Calendar" link on the school website. You may also sign up for notifications from the calendar site which will alert you to upcoming contests and schedule changes. Coaches' contact information is also found on the calendar site.

*A **user guide** for the school calendar website can be found [here](#). There is also a free mobile app to access the school calendar. Search "Activity Scheduler" in your app store. The app has been recently upgraded so check it out!

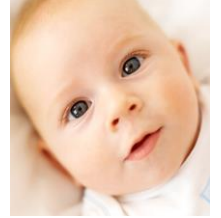
*Our **spirit wear** page is on the school website. Look for the spirit wear link on the top of the homepage. Get **20% off** any order of \$85 or more through October using promo code **OCT31**.



IMPORTANT SENIOR PICTURE INFO

TO: **SENIORS** and PARENTS of the **Class of 2022**

Senior year is one of the most memorable years in a person's life and one involving many important decisions. One lasting memory of this year is the senior class portrait. **Now is the time to plan for senior pictures if you have not already done so.** Traditionally, these photos are taken early in senior year, so that by January 1 everyone has chosen proofs and has the pictures back to exchange with friends and put in the yearbook.



For our yearbook, one **color** wallet-size print or digital file (approximately 2" wide x 3" high or larger) is needed **by MARCH 1**. Your photographer should send these to RLHS at no charge, or you can bring the photo in yourself. **OR...** You (or the photographer) also may submit a digital picture on a flash drive, or email it (as an attachment not an inline photo) to jporter@RacineLutheran.org or dmenk@RacineLutheran.org. Make sure digital pictures are high-resolution, at least 300 dpi.

You have many options. You may choose a professional photography studio or a family photographer, whatever you like best. There is a wide range of prices, picture quality, number of poses, changes of outfits, different settings, and other services. The cost will vary greatly for the senior-special packages, so compare, look at the samples on display and online, and ask a lot of questions.

Look at past yearbooks and write down the ideas you like best, otherwise you'll forget what you liked! *Consider:* indoors/outdoors, what to wear, which backgrounds, clear or shadowy or fuzzy focus, different poses, casual with your dog or more formal with a tie? **(No sideways, no horizontal pictures or full body standing head-to-foot shots can be used in the yearbook. No very low-cut, revealing tops for the ladies.)** You might want props like a pet, car, or soccer ball. Beware of wearing clothes too trendy or loud, because this picture may hang on the wall in your home for many years, and some fashions look pretty silly after they go out of style. These are just a few points to consider. The photographer will have lots more tips for you. It is a really good idea to have at least one pose taken in which you are a little more dressed-up; more formal looks are back in, and when seniors are asked to submit photos for applications or announcements, it's good to have a more sophisticated look to submit. It's up to you. Casual is fine, too.

The choices are yours, and the responsibility of having your picture taken is yours, too. If you have questions, please call or text Julie Porter at 262-498-5919 or email jporter@RacineLutheran.org, or Deb Menk at dmenk@RacineLutheran.org. **If you are not going to have a senior portrait done, please let us know, and we will make other arrangements or use the school ID picture taken this fall** so that every senior is included in the 2022 yearbook. Thanks for your cooperation.

Also needed for the 2022 Yearbook...

By **February 1**, every senior needs to submit **baby, childhood, and casual** pictures for his/her page in the senior section.

- You may submit from 3 to 8 pictures (any size – we can resize).
- **We would like at least one baby/toddler picture, at least one childhood picture, and at least one candid picture. (The candid could be you with friends, family, pet, in a sport, on vacation, etc.)**
- These pictures will be scanned, and the original photos will be returned to you quickly (usually within a week) and unharmed.
- You may also choose to scan your own pictures and submit the digital JPEG files on a flash drive, or email them to dmenk@racinelutheran.org or jporter@RacineLutheran.org or text to Mrs. Porter at 262-498-5919. If you scan your own, set the resolution to 300 dpi. If you send photos by email, **please send them as ATTACHMENTS**. First open your email, click the attachment icon, then select your photo files and send them as attachments. If you email through your phone, choose the largest file size (highest resolution).
- Please do not turn in computer printouts of pictures or photocopies-- they will be blurry when scanned and reprinted. Send the original digital file rather than a print unless it is a VERY high-quality print.
- Please label your pictures on the back (use permanent marker or pencil, **no ballpoint ink** since it smudges permanently onto your pictures). Turn them in to the school office in an envelope or plastic bag, also labeled with your name.
- You will have an opportunity to make changes before the final pages are sent to the publisher -- *if* you turn in your photos on time.

If you have questions about the pictures, we will be glad to help. Contact either Mrs. Menk or Mrs. Porter.

